

ADePT Quick Reference

Follow the numbered steps to perform an analysis.

After launching ADePT, double-click desired module in **Select ADePT Module** window. **Module > Select Module...** to change module from within ADePT.

Use the example project (**Project > Open Example Project**) to familiarize yourself with ADePT analysis steps, options, reports and other features.

1. Click **Add...** to load dataset(s). Enter dataset year in **Label** column.

3. Select tables and/or graphs to be included in report.

Click **Variables** tab to see basic variable information for selected dataset.

Click **Browse...** to see data, and variable details, for selected dataset.

(Shortcut: double-click file name.)

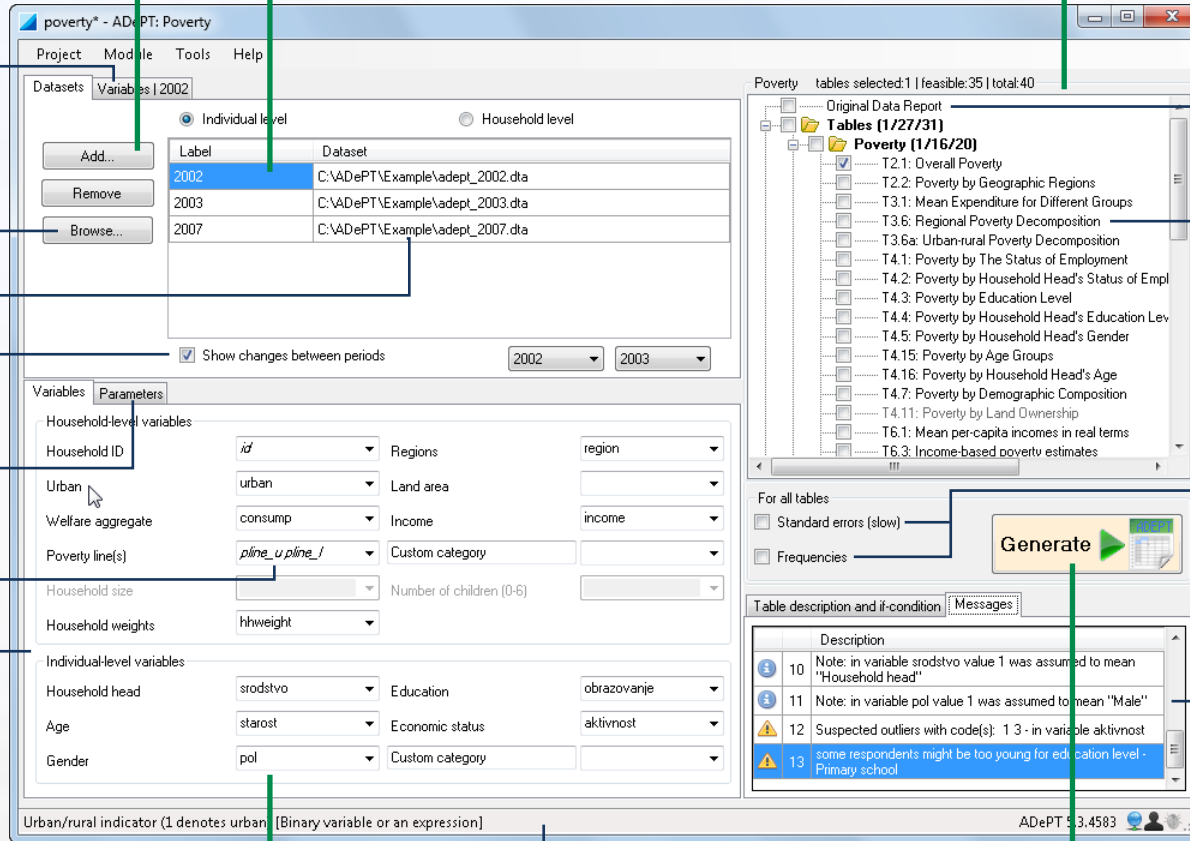
Select to calculate changes between two years selected at right.

Click **Parameters** tab to adjust factors used in calculations.

Italics: field can accept multiple input variables.

This panel is module-specific.

Project > Open Example Project to see dataset variables properly mapped to input variables.



Select to include summary of original data in report.

Select name to see details in **Table description** and **if-condition** tab below.

Select to calculate standard errors and/or frequencies for each table. Report shows results in separate worksheets for each selected table.

Review messages for potential calculation problems. Messages are also in report's **Notifications** worksheet.

2. Map dataset variables to input variables by selecting dataset variables in drop-down lists.

Alternatively, drag variable names from dataset **Variables** tab and drop in fields in input **Variables** tab.

4. Click **Generate** button. Report is automatically displayed in Microsoft® Excel® or Excel Viewer.

Report can also be viewed in an Excel-compatible spreadsheet program.

Hover cursor over input variable names and fields to see description in status bar.